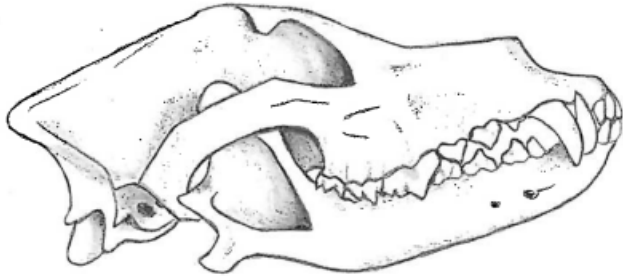


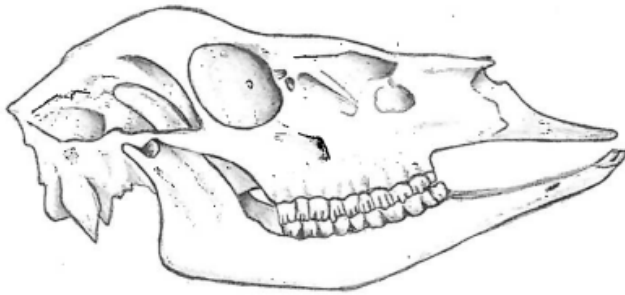
What Does a Carnivore Adore?

While animals will sometimes snack on food outside of their usual diet, there are three main categories of eaters in the animal kingdom. A **carnivore** is a meat-eater. Carnivores have a short and acidic digestive tract, which helps them digest meat and all the germs that come with it.



Like you can see on this wolf skull, carnivores have teeth that are perfect for puncturing and slicing meat.

The opposite of a carnivore is an **herbivore**, or a plant-eater. Herbivores have very long digestive systems that are designed to ferment plants and extract proteins from them.



This deer skull has teeth that are perfect for crushing and grinding plants.

So what is a human? We are **omnivores**, which is an animal that eats both meat and plants in abundance. Our digestive system length is right in the middle of a carnivore and an herbivore.



Check out this human skull! We have teeth in our mouths both for crushing plants and slicing meat. Open your mouth and take a look! What do you see?